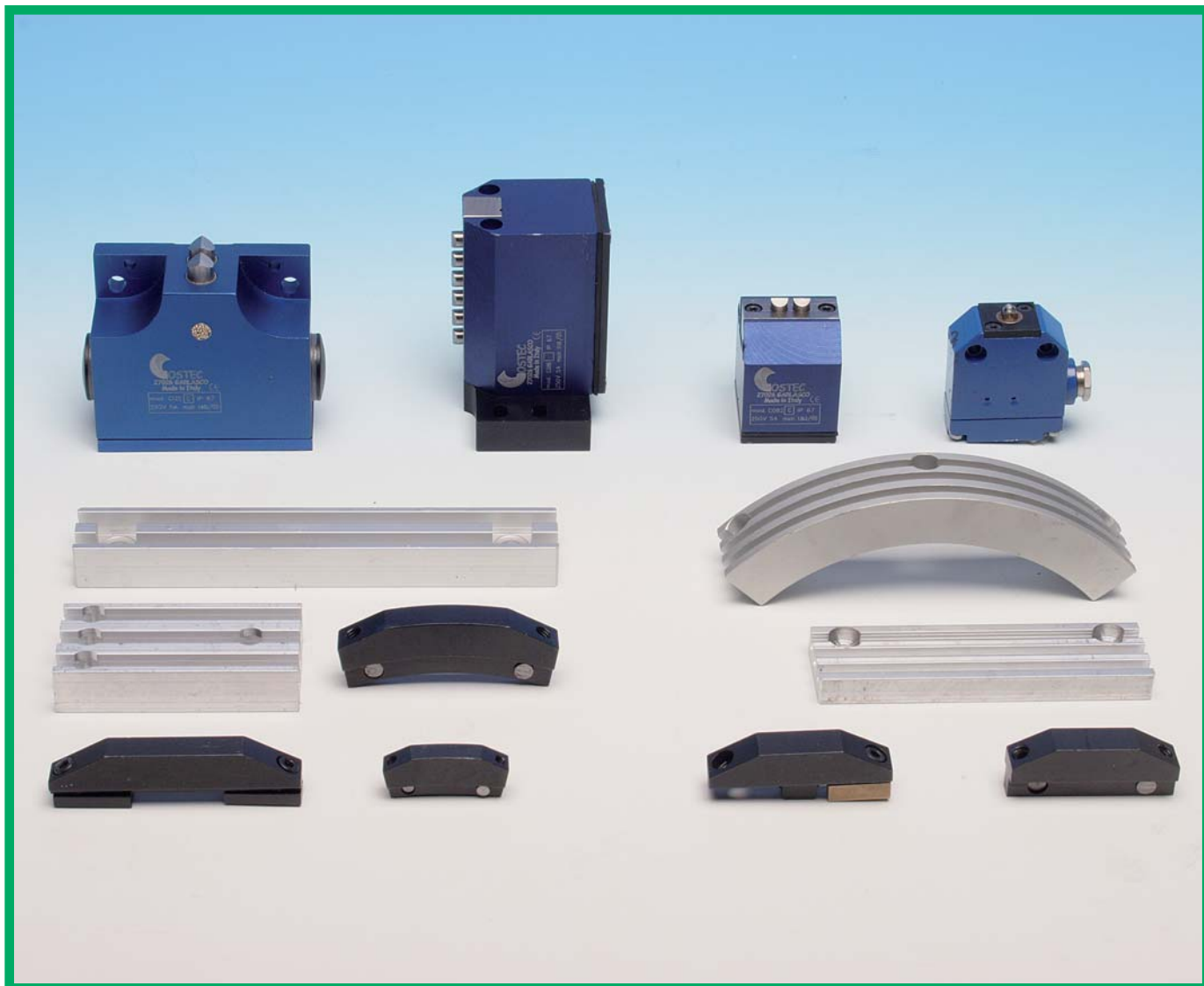


FINECORSA CAMME GUIDE



GOSTEC SRL

FINECORSA MULTIPLI DI PRECISIONE

PRECISION MULTIPLE LIMIT SWITCHES

SERIE C12/16 Esecuzione verticale,
flangia ridotta IP67,
passo pulsanti 12/16 mm

SERIE C08 Esecuzione verticale,
con e senza flangia,
passo pulsanti 8 mm

COSTRUZIONE

I finecorsa multipli di precisione sono realizzati in alluminio ricavato dal pieno ed anodizzati i pulsanti sono in acciaio trattati in nitreg.

Esecuzione a cuneo e rotella, guarnizioni realizzate in NBR.

Grado di protezione IP67.

Microinterruttore a doppia apertura DPDT.

SERIE C12/16 - Passo tra i pulsanti di 12 oppure 16 mm secondo norme DIN 43697.

SERIE C08 - Esecuzione compatta - passo 8 mm - microinterruttore SPDT. Attacchi a vite o a saldare.

SERIE C12/16 Vertical execution,
reduced flange IP67,
push-buttons slot spacing
12/16 mm

SERIE C08 Vertical execution,
with or without flange,
push-buttons slot spacing
8 mm

COSTRUCTION

The precision multiple limit switches are full made of anodised aluminium. The buttons are made of steel and treated with nitreg.

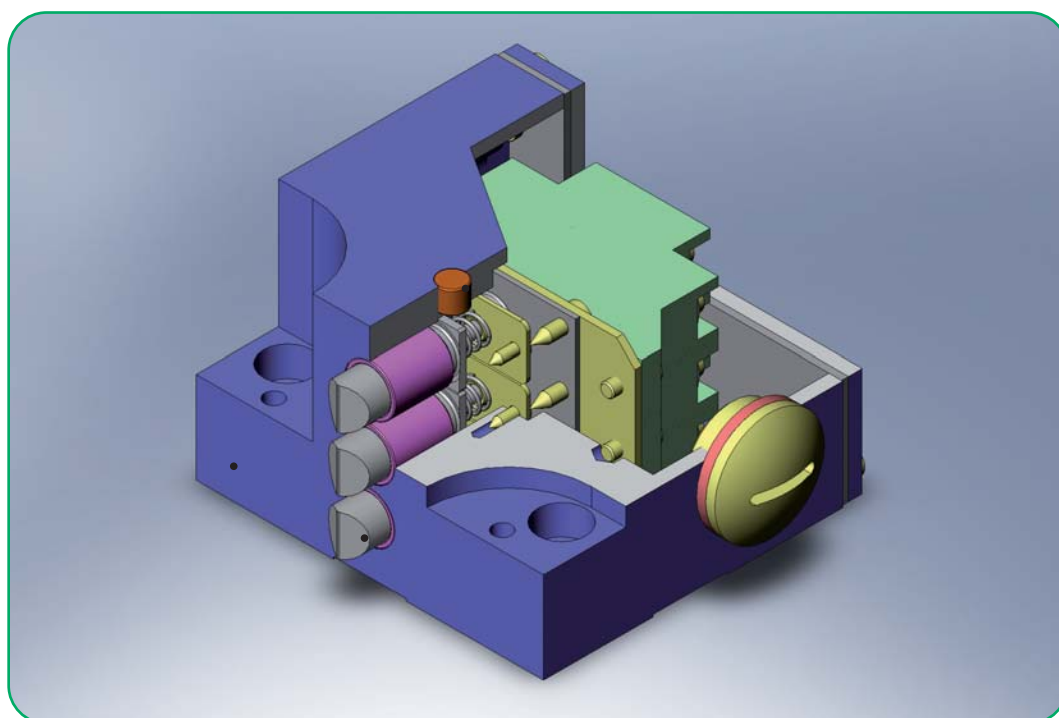
Wedge and roller execution, gaskets made of NBR.

Protection degree IP67.

Micro-switches with double opening. DPDT.

SERIE C12/16 - Slot spacing between push-buttons of 12 or 16 mm according to DIN 43697 standards.

SERIE C08 - Compact execution - push-buttons slot spacing 8 mm - microswitch SPDT - screw or welding mounting.



FINECORSA MULTIPLI DI PRECISIONE

PRECISION MULTIPLE LIMIT SWITCHES



SERIE C12/16 Passo 12/16 mm, esecuzione verticale, flangia ridotta, materiale alluminio anodizzato, grado di protezione IP67, tipo pulsanti cuneo e rotella, frutto interno COCR83993001, numero pulsanti 2-3-4-5-6-8-10-12

SERIE C12/16 Slot spacing 12/16 mm, vertical execution, reduced flange, material anodised aluminium, protection degree IP67, type of push-button wedge and roller, inner part COCR83993001, number of push-buttons 2-3-4-5-6-8-10-12

N° PULSANTI
N° OF BUTTONS

PASSO 12-L
SLOT SPACING 12-L

PASSO 16-L
SLOT SPACING 16-L

INGRESSO CAVI
CABLES ENTRY

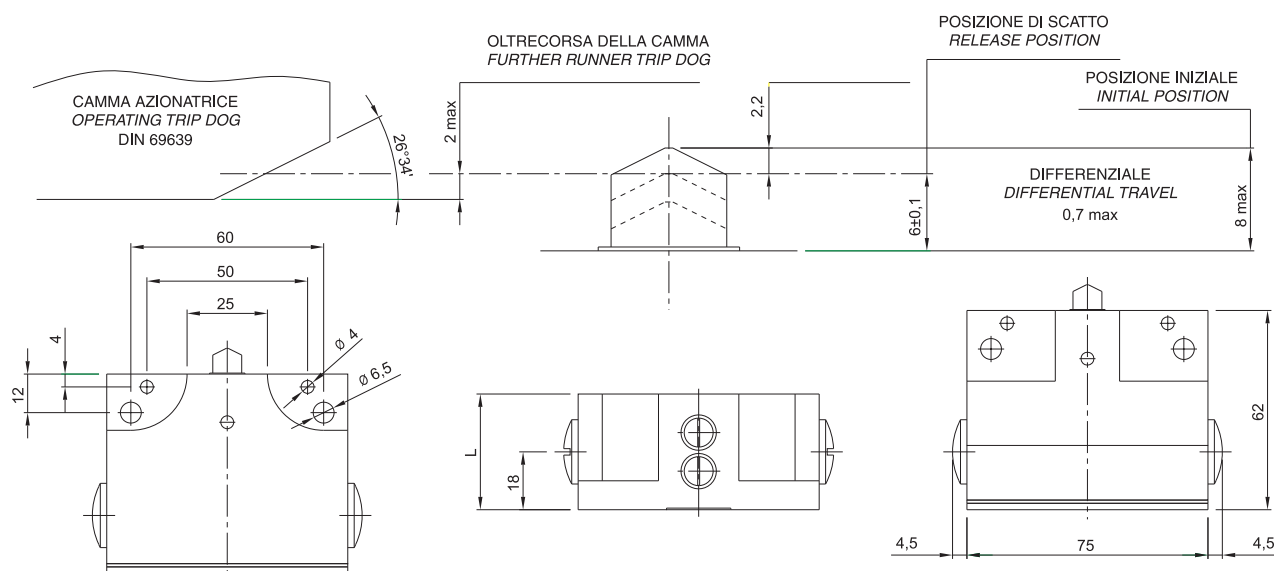
COMPOSIZIONE SIGLA
CODE COMPOSITION

TIPO (C12)
TYPE (C12)

N° PULSANTI
N° OF BUTTONS

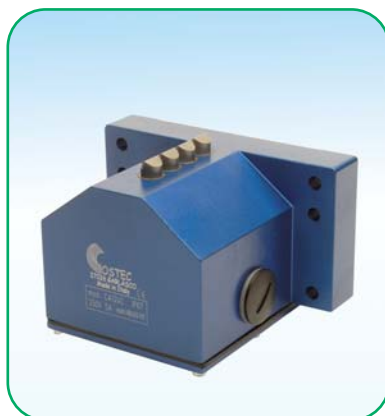
C = CUNEO / WEDGE
R = ROTELLA / ROLLER

C 1 2



SERIE CA12/CA16 Passo 12/16 mm, esecuzione verticale, flangia ridotta, materiale alluminio anodizzato, grado di protezione IP67, tipo pulsanti cuneo e rotella, frutto interno COCR83993001, numero pulsanti 2-3-4-5-6-8-10-12

SERIE CA12/CA16 Slot spacing 12/16 mm, vertical execution, reduced flange, material anodised aluminium, protection degree IP67, type of push-button wedge and roller, inner part COCR83993001, number of push-buttons 2-3-4-5-6-8-10-12



N° PULSANTI
N° OF BUTTONS

PASSO 12-L
SLOT SPACING 12-L

PASSO 16-L
SLOT SPACING 16-L

INGRESSO CAVI
CABLES ENTRY

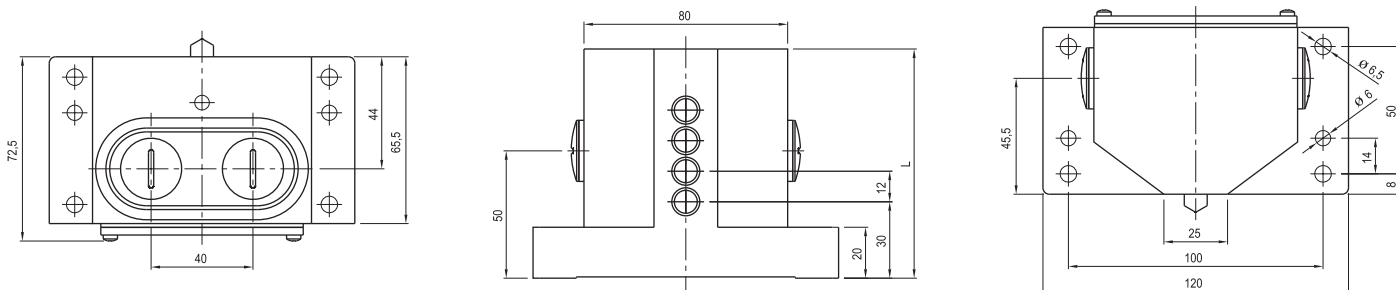
COMPOSIZIONE SIGLA
CODE COMPOSITION

TIPO (CA12/CA16)
TYPE (CA12/CA16)

N° PULSANTI
N° OF BUTTONS

C = CUNEO / WEDGE
R = ROTELLA / ROLLER
RS = CUSCINETTO A SFERA / BALL BEARING

C A 1 2
C A 1 6



FINECORSA MULTIPLI DI PRECISIONE

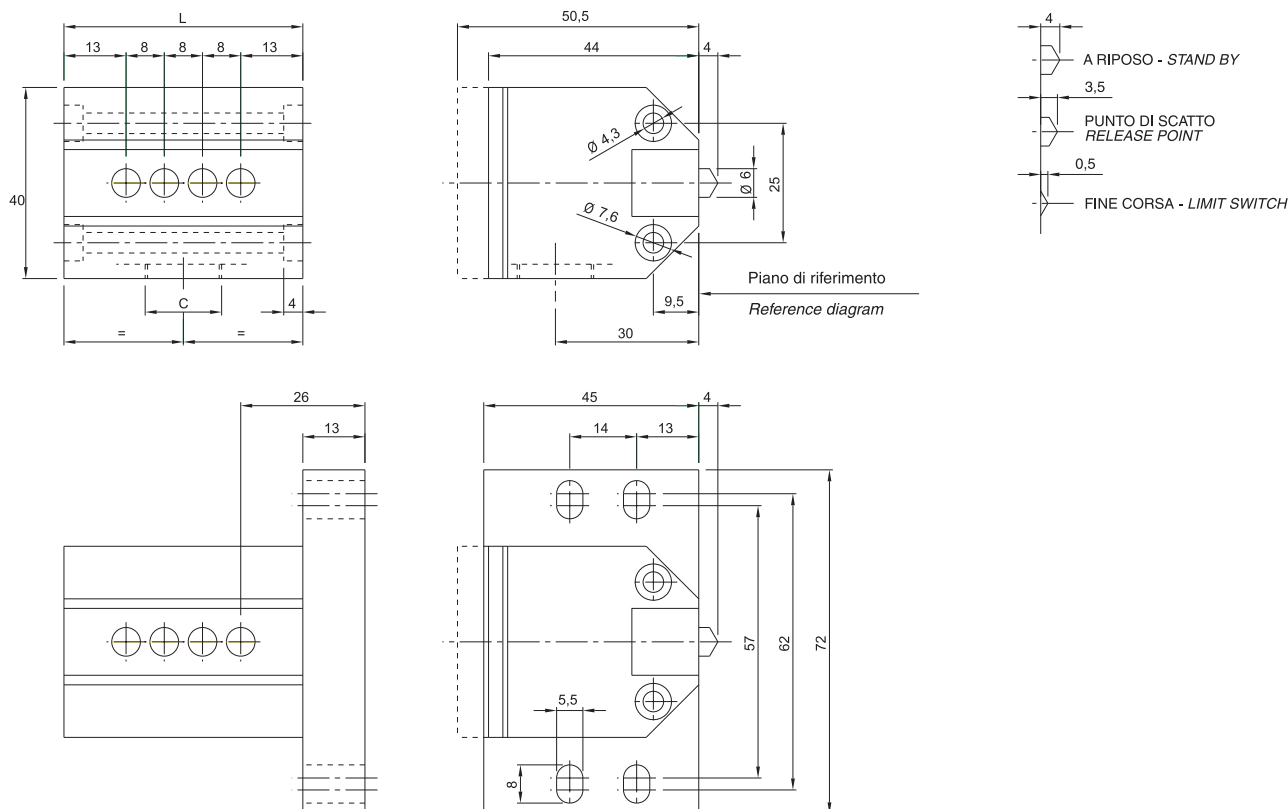
PRECISION MULTIPLE LIMIT SWITCHES

SERIE CO8

Passo 8 mm,
esecuzione verticale,
con e senza flangia,
materiale alluminio anodizzato,
grado di protezione IP67,
tipo pulsanti cuneo e rotella,
frutto interno COCR5141 a vite
oppure 83186 a saldare

SERIE CO8

Slot spacing 8 mm,
vertical execution,
with or without flange,
material anodised aluminium,
protection degree IP67,
type of push-buttons: wedge and roller,
inner part COCR5141 screw or
weld mounting



COMPOSIZIONE SIGLA
CODE COMPOSITION

C 0 8

N° PULSANTI
N° OF BUTTONS

2 3 4 5 6 8 10

L

34 42 50 58 66 74 90

INGRESSO CAVI
CABLES ENTRY

M16 x 1,5

M20 x 1,5

TIPO
TYPE

N° PULSANTI
N° OF BUTTONS

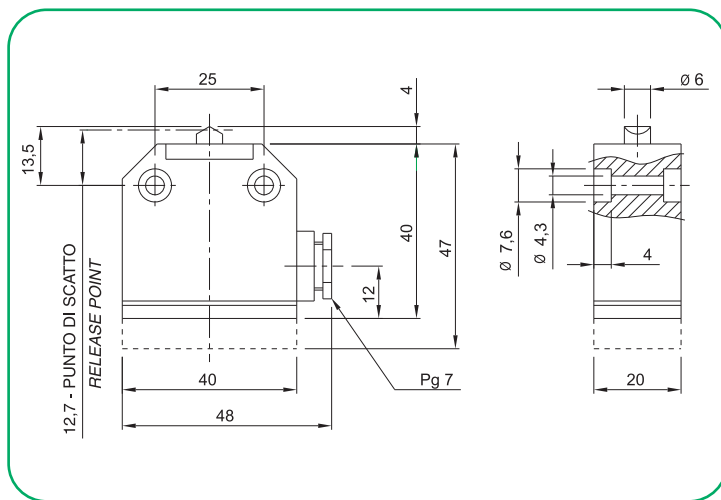
C= CUNEO
WEDGE
R= ROTELLA
ROLLER
S= SALDARE
WELD
V= VITE
SCREW

FINECORSA SINGOLO DI PRECISIONE

PRECISION SINGLE LIMIT SWITCHES

SERIE CO81 Pulsante acciaio inossidabile, materiale alluminio pressofuso, grado di protezione IP67, temperatura ambiente -5°C +80°C, tipo pulsanti cuneo e rotella, tipo di microinterruttore a vite o saldare COCR514183186

SERIE CO81 *Stainless steel push-button, material diecast aluminium, protection degree IP67, ambient (operating) temperature -5°C +80°C, type of buttons wedge and roller, type of microswitch COCR514183186 screw or weld mounting*



COMPOSIZIONE SIGLA
CODE COMPOSITION

C 0 8 1

TIPO
TYPE

C= CUNEO
WEDGE

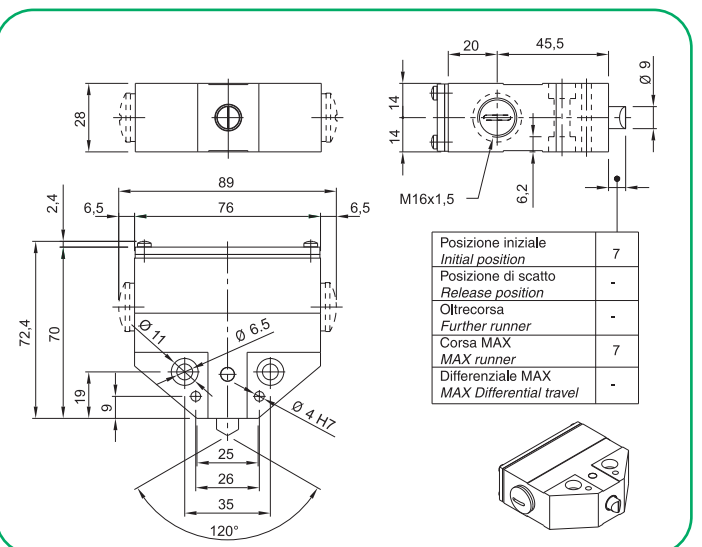
R= ROTELLA
ROLLER

S= SALDARE
WELD

V= VITE
SCREW

SERIE C141 Pulsante acciaio, materiale alluminio, grado di protezione IP67, temperatura ambiente -5°C +80°C, tipo pulsanti cuneo e rotella, tipo di microinterruttore COCR5142 - 1NA + 1CN

SERIE C141 *Steel push-button, material aluminium, protection degree IP67, ambient (operating) temperature -5°C +80°C, type of buttons wedge and roller, type of microswitch COCR5142 - 1NA + 1CN*

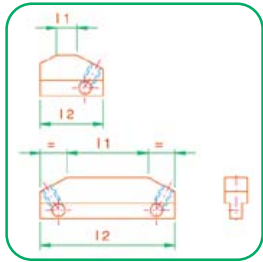


CAMME PER FINECORSA

CONFORMI ALLE NORME DIN 69639

TRIP DOGS FOR MULTIPLE LIMIT SWITCHES

ACCORDING TO DIN 69639 STANDARDS



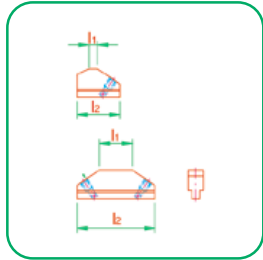
Tipo / Type	Figura / Figure	1	2
DU 0		0	21
DU 4	1	4	25
DU 6.3		6.3	27
DU 10		10	31
DU 16	2	16	42
DU 25		25	51
DU 40		40	66
DU 63		63	89
DU 100		100	126
DU 130		130	156

CAMME DI AZIONAMENTO TIPO DU

- Per guide UL $p = 12 - 16$
- In acciaio C40
- Trattate in Nitox nero
- Dispositivo di bloccaggio a mezzo cilindretto

TRIP DOGS TYPE DU

- For UL trip rails $p = 12 - 16$
- In C40 steel
- Treated in black Nitox
- Middle cylinder locking switch



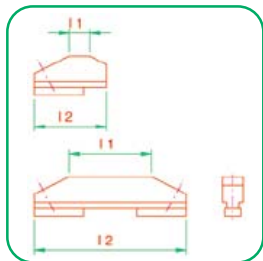
Tipo / Type	Figura / Figure	1	2
DU8 0		0	17
DU8 4	1	4	21
DU8 6.3		6.3	23
DU8 10		10	30
DU8 16	2	16	36
DU8 25		25	45
DU8 40		40	60
DU8 63		63	83
DU8 100		100	120
DU8 130		130	150

CAMME DI AZIONAMENTO TIPO DU8

- Per guide $p = 8$
- In acciaio C40 brunito
- Trattate in Nitox nero

TRIP DOGS TYPE DU8

- For trip rails $p = 8$
- In burnished C40 steel
- Treated in black Nitox



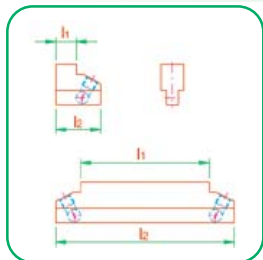
Tipo / Type	Figura / Figure	1	2
DC-00		0	25
DC-04	1	4	29
DC-6.3		6.3	31
DC-10		10	35
DC-16	2	16	41
DC-25		25	50
DC-40		40	74
DC-63		63	97
DC-80		80	114
DC-100		100	134
DC-130	130	164	

CAMME DI AZIONAMENTO TIPO DC

- Per guide con profilo a T $p = 12$ Tipo DS
- In acciaio C40 brunito
- Trattate in Nitox nero
- Dispositivo di bloccaggio tramite vite verticale con chiave 3 mm

TRIP DOGS TYPE DC

- For trip rails with T profile $p = 12$ Type DS
- In burnished C40 steel
- Treated in black Nitox
- Locking switch through vertical screw with 3 mm key



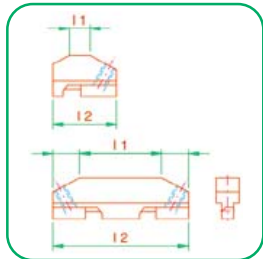
Tipo / Type	Figura / Figure	1	2
DUP-10		10	22
DUP-16	1	16	28
DUP-25		25	37
DUP-40		40	52
DUP-63	2	63	87
DUP-100		100	124
DUP-125		125	149

CAMME PER PROXIMITY TIPO DUP

- Per guide UL $p = 12 - 16$
- In acciaio C40
- Trattate in Niploy
- Dispositivo di bloccaggio a mezzo cilindretto

TRIP DOGS FOR PROXIMITY TYPE DUP

- For UL trip rails $p = 12 - 16$
- In C40 steel
- Treated in Niploy
- Middle cylinder locking switch



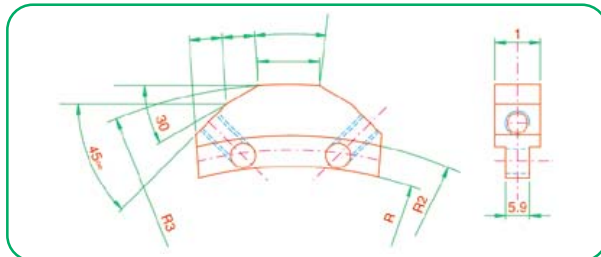
Tipo / Type	Figura / Figure	1	2
DUN 0		0	23
DUN 4	1	4	27
DUN 6.3		6.3	29
DUN 10		10	33
DUN 16	2	16	39
DUN 25		25	55
DUN 40		40	70
DUN 63		63	93
DUN 100		100	130
DUN 130		130	160

CAMME DI AZIONAMENTO TIPO DUN

- Per guide UL $p = 12 - 16$
- In acciaio C40
- Trattate in Nitox nero
- Dispositivo di bloccaggio a mezzo tassello in ottone

TRIP DOGS TYPE DUN

- For UL trip rails $p = 12 - 16$
- In C40 steel
- Treated in black Nitox
- Middle plug brass locking switch

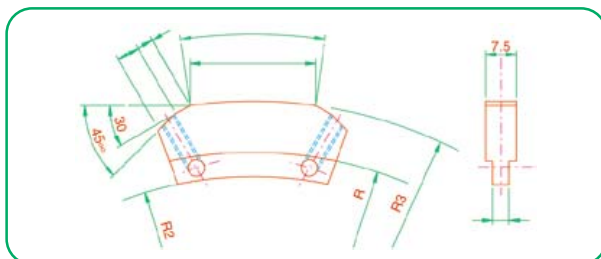


CAMME DI AZIONAMENTO CIRCOLARI PASSO 12

- Misure a richiesta

CIRCULAR TRIP DOGS SLOT SPACING 12

- Measures available upon request

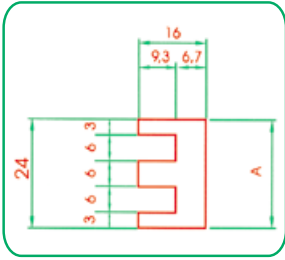


CAMME DI AZIONAMENTO CIRCOLARI PASSO 8

- Misure a richiesta

CIRCULAR TRIP DOGS SLOT SPACING 8

- Measures available upon request



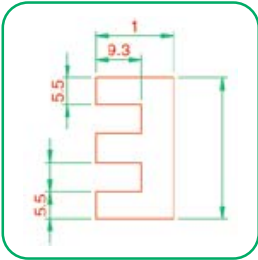
GUIDE SCANALATE COMPONIBILI TIPO UL PASSO 12-16

Guide in alluminio con profilo a U

MODULAR GROOVED TRIP RAILS TYPE UL SLOT SPACING 12-16

Aluminium trip rails with U profile

Tipo Type	N° scanalature N° of slots	Passo Slot spacing	A	L. max max L
UL2-12	2		24	
UL3-12	3	12	36	4 m
UL4-12	4		52	
UL2-16	2	16	32	4 m
UL3-16	3		48	



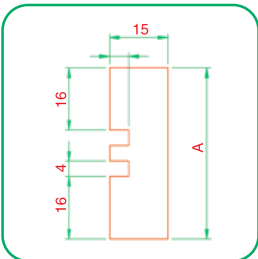
GUIDE SCANALATE COMPONIBILI TIPO UL PASSO 12

Guide in alluminio con profilo a U

MODULAR GROOVED TRIP RAILS TYPE UL SLOT SPACING 12

Aluminium trip rails with U profile

Tipo Type	N° scanalature N° of slots	Passo Slot spacing	A	L. max max L
ULB2-12	2		29	
ULB4-12	4	12	53	2 m
ULB6-12	6		77	



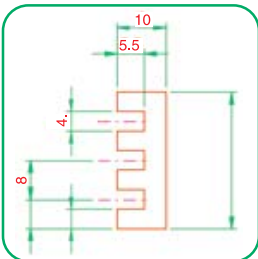
GUIDE SCANALATE COMPONIBILI TIPO UL PASSO 8

Guide in alluminio con profilo a U

MODULAR GROOVED TRIP RAILS TYPE UL SLOT SPACING 8

Aluminium trip rails with U profile

Tipo Type	N° scanalature N° of slots	Passo Slot spacing	A	L. max max L
ULT2-8	2		44	
ULT3-8	3	8	52	2 m
ULT4-8	6		60	



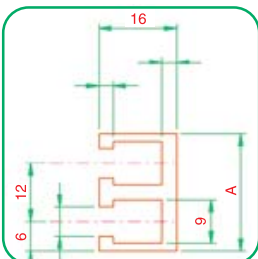
GUIDE SCANALATE COMPONIBILI TIPO UL PASSO 8

Guide in alluminio con profilo a U

MODULAR GROOVED TRIP RAILS TYPE UL SLOT SPACING 8

Aluminium trip rails with U profile

Tipo Type	N° scanalature N° of slots	Passo Slot spacing	A	L. max max L
UL2-8	2		20	
UL3-8	3	8	28	4 m
UL4-8	4		36	
UL5-8	5		44	



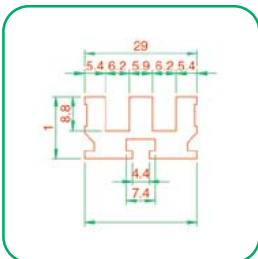
GUIDE SCANALATE COMPONIBILI TIPO DS PASSO 12

Guide in alluminio con profilo a T

MODULAR GROOVED TRIP RAILS TYPE DS SLOT SPACING 12

Aluminium trip rails with T profile

Tipo Type	N° scanalature N° of slots	Passo Slot spacing	A	L. max max L
DS2-12	2		24	
DS3-12	3		36	
DS4-12	4	12	48	2 m
DS6-12	6		72	
DS8-12	8		96	



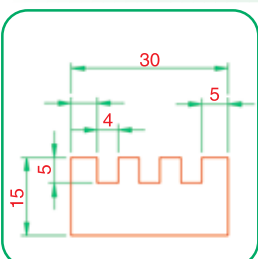
GUIDE SCANALATE COMPONIBILI TIPO UL PASSO 12

Guide in alluminio con profilo a U

MODULAR GROOVED TRIP RAILS TYPE UL SLOT SPACING 12

Aluminium trip rails with U profile

Tipo Type	N° scanalature N° of slots	Passo Slot spacing	A	L. max max L
ULM2-12	2	12	29	2 m
ULM3-12	3		41	



GUIDE SCANALATE COMPONIBILI TIPO UL PASSO 8

Guide in alluminio con profilo a U

MODULAR GROOVED TRIP RAILS TYPE UL SLOT SPACING 8

Aluminium trip rails with U profile

Tipo Type	N° scanalature N° of slots	Passo Slot spacing	A	L. max max L
ULB3-15-18	3	8	30	2 m

COSTEC SRL

